

4th annual

Women in Mining 2026

25 - 27 August 2026
Brisbane | Australia

The skills, strategies & connections you need to thrive in mining

Speakers include:



BHP

Katie Wyatt
Global Head of Diversity,
Equity and Inclusion
BHP



Dañe van Heerden
Chief Financial Officer
Aeris Resources



Nicola Semler
Chief Technology Officer
Critical Minerals Group



Sally Rayner
Chief Operating Officer
Delta Electricity



Lisa Breen
Chief People Officer
Liontown Resources



Dr Mahdi Mason
Head of Sustainability,
Health, Safety &
Compliance
Sojitz Blue



Scott Winter
Managing Director
Critical Minerals Group



Kim Wainwright
Chair
Queensland Exploration
Council



Bonnie Coxon
General Manager -
People Experience
Evolution Mining



Emily Coutts
Head of Human
Resources - Australia
ASTRON Rare Earth Metals &
Mineral Sands



Raina Hattingh
Group Manager -
Rehabilitation & Closure
Whitehaven Coal



Samantha Langley
Head of Sustainability &
Enterprise Risk
Vulcan Energy



Nick Baker
General Manager & Site
Senior Executive
Austral Resources
Australia



Johanna Kennerley
Head of Sustainability &
Environment
Ravenswood Gold



Joanne Bergamin
Non-Executive Director
Sunshine Metals
Chair & Chief Executive
Officer
WISER

REGISTER TODAY!

Register online at www.womeninminingsummit.com.au

Register on or before 19 June and save up to \$1,000. Group discounts up to 25% apply!

Supporting Partners:



Organised by:



Our Advisory Board:



Johanna Kennerley
Head of Sustainability & Environment
Ravenswood Gold



Tanya Cambetis
Project Manager –
Underground Operations
and Transformation
OceanaGold



Nicola Semler
Chief Technology Officer
Critical Minerals Group



Lara Jefferson
Environmental Manager
SQM International Lithium



Kate Baker
Manager
Office of the Queensland
Mine Rehabilitation
Commissioner



Melissa Rasmussen
Senior HR Advisor
New Hope Group



Bromley Rowe
Manager - Human
Resources Business
Partner
Orica



"Amazing lineup of women achieving incredible things who are passionate about mining. Empowering and forward looking for the industry."

Compliance Manager, **Field Mining Services Group** (past attendee)

Welcome to Women in Mining 2026!



The **Women in Mining Summit 2026** returns with an agenda designed to help you strengthen your skills, improve your projects, expand your network, and take the next step in your career with a programme built around one question: what does it take to build an industry where the best people rise, regardless of gender?

You'll hear real-world case studies from organisations driving meaningful change, connect with peers across the industry, and take part in interactive discussions designed to help you share ideas and learn from one another.

This is more than a conference. It's a collaborative experience built to help you grow your career, strengthen your impact, and shape the future of mining.

Top 7 reasons to attend:

- 1 Join the premier event for women in mining to accelerate career and operational success
- 2 Hear how women reached senior mining leadership roles and what made it possible
- 3 Gain practical strategies for retention, return-to-work and protecting talent pipelines
- 4 Explore the full career lifecycle, from early entry to mid-career and over-55 talent
- 5 Join an open, practical conversation about women's health in mining
- 6 Examine how AI, automation and critical minerals are reshaping workforce opportunities
- 7 Build meaningful connections through roundtables, panels and practical networking



REGISTER TODAY!

+61 (0)2 9977 0565 info@questevents.com.au www.womeninminingsummit.com.au

Additional speakers



BHP

Karina Lynch
Principal Asset Improvement - Operations Services
BHP & Co-Director IWIMRA Indigenous Corporation



OCEANA GOLD

Tanya Cambetis
Project Manager – Underground Operations and Transformation
OceanaGold



Whitehaven

Tracy Fagg
Superintendent - Coal Mining
Whitehaven Coal



Delta

Clair Osbourne
Chief People Officer
Delta Electricity



BHP

Linda Murry
Head of Resource Excellence
BHP



chinova resources

Bobbie Hart
Human Resources Superintendent
Chinova Resources



WIMARO

Kristy Purdon
Co-Chair
WiMARQ



WIMARO AWIMAR

Kana'e Dyas
Board Member
IMARQ Committee, AWIMAR & the Psychosocial Safety and Leadership Institute Board



AUSTMINE

Claire Chakrabarti
STEM Program Manager
Austmine



Queensland Government

Kate Baker
Manager
Office of the Queensland Mine Rehabilitation Commissioner



KESTREL COAL RESOURCES

Renee Acton
Manager - Health, Safety & Training
Kestrel Coal Resources



SQM

Lara Jefferson
Environmental Manager
SQM International Lithium



29 Metals

Dr Geraldine McGuire
Manager - ESG & Approvals
29Metals



sojitz
New way. New value

Lucy Formosa
Head of Human Resources
Sojitz Blue



mining3

Dr Helen Degeling
Director of Geoscience & Sustainability
Mining3



Aeris resources

Larnie Roberts
Chief People Officer
Aeris Resources



REIA

Andrea Cornwell
Director - Asia Pacific
REIA - The Global Rare Earth Industry Association



Sodali & Co

Jana Jevcakova
Senior Advisor - Corporate Governance & Sustainability
Sodali & Co



Bronwyn Williams
Keynote Speaker, Mentor, PhD Researcher



QUEENSLAND resources COUNCIL

Jen Hoyle
Acting Director
QMEA & DEI Queensland Resources Council





Conference Day 1 | Wednesday, 26 August

08:00 Registration & welcome tea and coffee

08:50 Opening remarks from the Chair



Andrea Cornwell
Director, Asia Pacific
REIA | The Global Rare Earth Industry Association

Women in operational leadership

09:00 **What we need to do to have more women reach operational leadership**

- Identifying what gets women into senior operational roles
- Benchmarking operational leadership representation
- Equipping leaders with practical frameworks



Tanya Cambetis
Project Manager - Underground Operations and Transformation
OceanaGold

09:30 Partner presentation

09:50 Panel Discussion: **Why do operational leadership opportunities for women keep stalling, and what will it take to move them forward?**

Moderator:



Tanya Cambetis
Project Manager - Underground Operations & Transformation
OceanaGold

Panellists:



Bonnie Coxon
General Manager - People Experience
Evolution Mining



Nick Baker
General Manager & Site Senior Executive
Austral Resources Australia



Bobbie Hart
Human Resources Superintendent
Chinova Resources



Jen Hoyle
Acting Director
QMEA & DEI Queensland Resources Council

10:30 Morning tea and networking

The retention imperative: flexibility, family, and the mid-career crossroads

11:00 **Solving the mid-30s exit - how to build real flexibility at the site level**

- Presenting operational models to support flexible rosters, job-sharing and modified site arrangements
- Quantifying the talent loss and replacement costs of the early-30s exit
- Identifying the policy and cultural changes needed to enable flexibility



Emily Courts
Head of Human Resources - Australia
Astron Rare Earth Metals & Mineral Sands

11:30 **Designing return-to-work pathways to support employee long term success**

- Walking through what the return-to-work journey looks like in operational and technical roles
- Equipping workers returning to the site with strategies for resetting visibility, rebuilding stakeholder relationships and renegotiating scope
- Sharing insights from those who've navigated returning to work successfully to build a usable re-entry playbook



Kristy Purdon
Co-Chair
WiMARQ

12:00 **How to advocate effectively for yourself and your team when times are tight**

- Understanding how commodity-driven restructures unfold to strengthen your position before the decisions are made
- Harder to overlook when headcount decisions hit
- Advocating for yourself and your team during a restructure



Katie Wyatt
Head of Diversity, Equity and Inclusion (Global)
BHP

12:30 Lunch and networking

13:30 Panel Discussion: **How can we design and implement rosters to make true diversity structurally possible to achieve?**

Moderator:



Andrea Cornwell
Director - Asia Pacific
REIA - The Global Rare Earth Industry Association

Panellists:



Lucy Formosa
Head of Human Resources
Sojitz Blue



Larnie Roberts
Chief People Officer
Aeris Resources



Tracy Fagg
Superintendent - Coal Mining
Whitehaven Coal

14:10 Partner presentation

A personal journey

14:30 Live One-on-One: **What it takes to show up, stay, and lead in the toughest room in the building**



A frank and open conversation with Leah Chapman, about what it's really like to work at the operational coalface of one of Australia's most male-dominated industries, the moments that tested her, the ones that defined her, and what the industry needs to understand to keep women working on the floor.

Special Guest:



Andrea Cornwell
Director - Asia Pacific
REIA | The Global Rare Earth Industry Association

Interviewer:



Leah Chapman
Lead Smelter Operator
Glencore

15:00 Afternoon tea

15:30 Champagne Roundtables

Share ideas, test approaches, and gain practical tips from your peers.

Round 1 15:30 - 16:00

Round 2 16:00 - 16:30

Round 3 16:30 - 17:00

Roundtable 1 **Protecting psychosocial health and the on-site experience**



Kana'e Dyas
Board Member, IMARQ Committee, AWIMAR, & the Psychosocial Safety and Leadership Institute

Roundtable 2 **Critical minerals, new operations and greenfield sites: building inclusive cultures from the ground up before the bad habits set in**



Dr Helen Degeling
Director of Geoscience & Sustainability
Mining3

Roundtable 3 **Sponsorship vs mentoring - what actually works?**



Joanne Bergamin
Non-Executive Director, Sunshine Metals; Chair & Chief Executive Officer, WISER (Women in Sustainable Energy & Resources)

Roundtable 4 **Decarbonisation on site - electrified fleets, renewable infrastructure and what the energy transition means for the women operating it**



Dr Mahdi Mason
Head of Sustainability, Health, Safety & Compliance
Sojitz Blue

Roundtable 5 **Rethinking mine closures as a strategic priority**



Raina Hattingh
Group Manager - Rehabilitation & Closure
Whitehaven Coal

Roundtable 6 **How to maintain team performance and culture when the ground keeps shifting beneath you**



Claire Chakrabarti
STEM Program Manager
Austmine

Roundtable 7 **How to back yourself into roles that stretch you beyond your current experience**



Dañe van Heerden
Chief Financial Officer
Aeris Resources

Roundtable 8 **How to stay on top of your game in an industry that's changing faster than ever before**



Nicola Semler
Chief Technology Officer
Critical Minerals Group

Roundtable 9 **Building technical portfolios that drive organisational performance in a changing industry**



Linda Murry
Head of Resource Excellence
BHP

Roundtable 10 **Turning ESG commitments into operational reality**



Diana Bozzetto
Vice President - Environment & Climate
OceanaGold

17:00 Closing remarks from the chair


17:05 Networking drinks

18:30 Networking dinner

"Fantastic venue, well-structured program, great line up of speakers and a very interactive audience."


Head of ESG, NiCo Resources



08:15 Welcome tea and coffee
 08:50 Opening remarks from the chair

Kim Wainwright
 Chair
[Queensland Exploration Council](#)

Embracing opportunities as they arise

09:00 **How to build a career where your leadership potential is never wasted**
 Building a career where your leadership potential is never wasted is harder than it should be, and nobody knows that better than the women who have done it. In this session, Lisa Breen shares the decisions, the turning points, and the moments she would handle differently if she had to do it all over again.


Lisa Breen
 Chief People Officer
[Liontown Resources](#)
 09:30 Partner presentation

Women's health, wellbeing and the lifetime career conversation

09:50 Fireside chat: **What will change when mining finally begins to take women's health seriously?**

- What is the day-to-day experience of managing women's health in mining?
- How should mental health conversations in mining be reshaped to address women's specific needs and experiences?
- For organisations succeeding in women's health, what changed first: policy, culture, or leadership?
- What initiative could most immediately improve women's health and wellbeing on site?



Facilitator:



Johanna Kennerley
 Head of Sustainability & Environment
[Ravenswood Gold](#)
 Special guests:



Kate Baker
 Manager, Office of the Queensland
[Mine Rehabilitation Commissioner](#)



Renee Acton
 Manager - Health, Safety and Training
[Kestrel Coal Resources](#)

10:30 Morning tea and networking

11:00 **Turning the over-55 talent pool to your advantage in your next competitive hire**

- Reframing your recruitment lens to ensure hiring criteria attracts talent overlooked by competitors
- Designing interview and selection processes to assess capability and potential rather than defaulting to unconscious bias
- Constructing targeted attraction and onboarding approaches for senior women re-entering the workforce or transitioning within the sector



Nicola Semler
 Chief Technology Officer
[Critical Minerals Group](#)

11:30 **Why women are rising to the top of the shortlist: what the mining industry is finally looking for in its leaders**

- Examining the shift in what mining organisations are looking for at the senior leadership level, to learn why values-based leadership and cultural change capability have moved from desirable to essential
- Exploring why the leadership qualities women have consistently demonstrated are now the qualities determining who gets the role
- Identifying what this shift means for women at every career stage, to leave with a clearer sense of how to position your own leadership capability for the decade ahead



Sally Rayner
 Chief Operating Officer
[Delta Power & Energy](#)



Clair Osbourne
 Chief People Officer
[Delta Power & Energy](#)

12:00 Lunch and networking

The mines of tomorrow: AI, sustainability & critical minerals

13:00 **How sustainable lithium extraction is reshaping Australia's role in the global energy transition**

- Examining how zero-carbon lithium production is reshaping the global battery supply chain to understand what the shift from hard rock mining to adsorption-based extraction means for Australian mining
- Exploring the commercial and environmental case for sustainable lithium at scale to attract green financing and premium offtake agreements with major EV manufacturers
- Identifying the skills the critical minerals sector demands of its next generation of professionals



Samantha Langley
 Head of Sustainability and Enterprise Risk
[Vulcan Energy](#)

13:30 Partner presentation

13:50 **AI as a career advantage: how to get ahead in mining's fastest changing decade**

- Exploring how AI and automation are creating new roles and reshaping existing ones, to understand where the real career opportunities are emerging before they become competitive
- Identifying the practical AI tools already being used across the mining sector, to leave with a personal toolkit you can apply to your work immediately
- Using AI to sharpen your communication, strengthen your executive presence and position yourself for advancement, to accelerate your career in the decade ahead



Lara Jefferson
 Environmental Manager
[SQM International Lithium](#)

14:20 Afternoon tea and networking

14:50 **Critical minerals and the equity opportunity in mining's next chapter**

- Examining which roles, the critical minerals boom is creating and where the entry points are for women to move into emerging disciplines before hierarchy's form around them
- Identifying what a genuinely inclusive critical minerals workforce looks like in practice & understanding what your organisation needs to build now rather than retrofit later
- Equipping leaders with insights focused on recruitment, career progression and investment that will determine whether the next wave of Australian mining growth is more equitable than the last



Scott Winter
 Managing Director
[Critical Minerals Group](#)

Inclusion in practice: culture, community and First Nations

15:20 **Small company, strong culture: what the mid-tier does differently and why it is working**

- Examining why smaller companies operating on Country often build stronger First Nations employment outcomes and what the relationship between proximity, accountability and community trust explains about their success
- Profiling mid-tier and junior mining companies where genuine inclusion is embedded in daily practice rather than documented in a strategy to identify what you may be over-engineering
- Challenging the assumptions that budget and DEI infrastructure are prerequisites for an inclusive culture by demonstrating the power of intention, consistency, and accountability on organisational culture



Dr Geraldine McGuire
 Manager - ESG & Approvals
[29Metals](#)

15:50 **Supporting First Nations women by moving from commitment to practice**

- Examining what genuine inclusion looks like for First Nations women navigating both gender bias and racism on site
- Assessing where RAPS, employment targets and procurement commitments are delivering real outcomes, and where the gap between promise and practice remains the widest
- Identifying the actions you can take to move your organisation from policy compliance to meaningful partnership with First Nations peoples



Karina Lynch
 Principal Asset Improvement - Operations Services, [BHP](#) & Co-Director, [IWIMRA Indigenous Corporation](#)

16:20 Closing remarks from the chair & summit adjourns

REGISTER TODAY!

Register on or before **19 June** and **save up to \$1,000!**
 Additional group discounts up to 25% apply.



REGISTER TODAY!



Pre-Conference Masterclasses

Tuesday, 25 August

**SEPARATELY
BOOKABLE**

Available to book separately or as a part of your 3-day conference pass

The pre-conference masterclasses provide attendees with morning and afternoon tea breaks and a 1-hour lunch break allowing for extra networking opportunities and in-depth learning.

The masterclasses start at 9:00 and finish at 17:00.

Masterclass A: How to build your ESG toolbox

In this intensive one-day masterclass, you will learn the core concepts, frameworks, and practical tools needed to develop a robust ESG strategy on site. This masterclass will equip you with the essential skills and insights you need to navigate the dynamic world of ESG and drive sustainable success across your organisation.

By the end of this masterclass, you will have:

- Gained a comprehensive understanding of the key principles and components of ESG, including how the environmental, social, and governance factors interplay within a business context
- Explored industry-leading frameworks, guidelines, and best practices for ESG integration, enabling you to develop a holistic and effective ESG strategy tailored to your organisation's unique needs and goals
- Acquired practical tools and methodologies to identify and assess material ESG issues, measure performance, set meaningful targets, and report progress transparently to stakeholders
- Understand how to navigate the evolving landscape of ESG disclosure standards, frameworks and compliance, and be able to communicate your ESG efforts to internal and external stakeholders effectively
- Developed the skills needed to engage stakeholders, including investors, employees, customers, and communities, in the journey towards sustainable business practices, fostering trust, and creating shared value
- Participated in interactive exercises, case studies, and group discussions that will deepen your understanding of real-world ESG challenges and provided practical insights into effective implementation

By attending How to build your ESG toolbox, you will leave with a comprehensive toolkit to shape and enhance your organisation's ESG strategy. You will gain the confidence to navigate the complex world of ESG, identify opportunities, mitigate risks, and drive sustainable business success.

This masterclass is designed for mining professionals who are interested in learning more about how to integrate ESG principles into their organisation's DNA.



Jana Jevcakova
Senior Advisor – Corporate Governance & Sustainability
Sodali & Co

Masterclass B: How to strengthen communication, collaboration & leadership

Women in mining work in environments where technical competence is expected, and leadership credibility must be continually demonstrated. But the leaders who move furthest and fastest are rarely those who are the most technically skilled. They are the ones who understand how the people around them think, make decisions and respond under pressure, and who use that understanding to build stronger teams, navigate conflict and drive change more effectively.

This one-day masterclass provides practical, skills-based training in thinking styles and leadership communication, tailored to the specific dynamics and challenges of mining environments.

Learning Outcomes:

- Examining the primary thinking and leadership styles that shape how people communicate, make decisions and respond to challenges, to understand why the same message lands differently depending on who is in the room
- Analysing your own thinking and leadership profile to identify the styles you naturally lead with, the styles you find most difficult to work with, and the gaps that may be costing you influence and effectiveness
- Understanding how thinking style diversity strengthens team performance and decision-making quality, and how leaders can deliberately build teams and environments that leverage that diversity rather than suppress it
- Leaving with a personal communication and collaboration action plan that identifies your two or three highest-leverage development priorities and the specific relationships and situations in your current role where applying them will have the greatest impact

Whether you lead a site team, manage cross-functional projects, or drive cultural change from the middle of a hierarchy, this session will give you a practical framework for understanding how others think and leading more effectively as a result.



Bronwyn Williams
Keynote Speaker, Mentor
PhD Researcher

Become a partner at the Women in Mining Summit 2026

The **Women in Mining Summit** is where Australia's most senior mining professionals come to have the conversations that matter. Sponsors gain direct access to decision makers from across the full mining value chain, HR and people leaders, operational managers, technology heads, sustainability executives and C-suite representatives, at a moment when workforce strategy, diversity and the future of the industry are at the top of every board agenda.

Contact **Skyla Boer** on
skylab@questevents.com.au
or **+61 (0) 450 778 591** to discuss
how we can build a partnership that
meets your business objectives.

REGISTER TODAY!

Register on or before **19 June** and **save up to \$1,000!** Additional group discounts up to 25% apply.

What everyone is saying about the Women in Mining Summit 2026

"Great coverage of technical and leadership aspects relating to improving the future state of mining."

Principal Advisor Closure, **Rio Tinto**



"This was beyond my wildest imagination. I thoroughly overcame my own fears and met interesting new people."

Mount Isa Mines Lead Smelter Operator, **Glencore Australia**

"An excellent opportunity to deep dive on issues women face in the industry but also to hear about our contributions and the ideas we are generating to change mining for the better."

Product Marketing Manager, **Imdex Limited**

"Very informative and thought provoking, with plenty of opportunities to network with people from inside and outside my organisation, at a beautiful venue."

Backfill Engineer, **Newmont Corporation**



"Thought provoking, challenging, inspiring, practical - great topics and fantastic presenters/panellists."

Chief Technology Officer, **Critical Minerals Group**

Registration

3 Day Standard Package

25 - 27 August

Full access to the 3-day main conference session

One pre-conference masterclass

All networking sessions

**Register on or before 19 June \$3,495
(Save \$1000)**

Regular Price \$4,495

2 Day Standard Package

26 - 27 August

Full access to the 2-day main conference sessions

All networking sessions

**Register on or before 19 June \$2,495
(Save \$1000)**

Regular price \$3,995

Pre-conference Masterclass only

25 August

One pre-conference masterclass

**Register on or before 19 June \$1,795
(SAVE \$400)**

Regular price \$2,195

3 Day Emerging Mining Leaders Package

25 - 27 August

Full access to the 3-day main conference session

One pre-conference masterclass

All networking sessions

**Register on or before 19 June \$2,995
(Save \$1000)**

Regular Price \$3,995

2 Day Emerging Mining Leaders Package

26 - 27 August

Full access to the 2-day main conference sessions

All networking sessions

**Register on or before 19 June \$1,995
(save \$1,000)**

Regular price \$2,995

Official Event Dinner

26 August

\$220

All prices are inclusive of GST

*Official event dinner is available to registered attendees of the conference only

*Emerging mining leaders pricing is only available to those with 6 years or less total industry experience. This will be verified by the Quest team, based on LinkedIn profile. Approval for this pricing is at the sole discretion of Quest Events.

Become a Diversity Partner

This is your chance to position your organisation as a marquee destination for the talented professionals you need on your team by demonstrating your commitment to diversity, equity & inclusion.

Simply register 6 or more delegates to attend and you'll receive:

- A 15% discount on the first 6 delegates, with deeper discounts for additional attendees
- The opportunity to feature one of your employees in an article shared on our website, on LinkedIn, and in an email, focusing on your organisation's DEI initiatives, accomplishments or rising stars
- A LinkedIn post highlighting your organisation as an employer of choice committed to diversity
- Branding as an official Diversity Partner on the conference website, brochure, and select marketing material
- A banner on stage and acknowledgement and thanks at the event for your support of DEI in mining

GROUP DISCOUNTS

15%

3-6
delegate package

20%

7-10
delegate package

25%

11+
delegate package

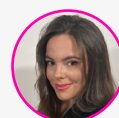
Please note, any eligible group discounts will be applied automatically once the final delegate registration has been completed.

Call our account executives with any questions or to discuss the best discount options for you.

Skyla Boer

📞 0450 778 591

✉️ skylab@questevents.com.au



Hux Russell

📞 0431 487 720

✉️ huxleyr@questevents.com.au

