

# Building the Skills That Will Define the Next Decade in Mining and Your Career



Celine Mangan

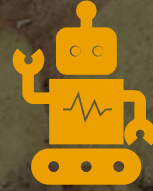
General Manager Environment & Heritage

27 August 2025





# The Evolving Landscape of the Mining Industry



Rapid technological  
advances  
(automation, AI,  
robotics)



Decarbonisation and  
ESG priorities



Social licence to operate  
– communities,  
Indigenous partnerships



Global competition for  
talent



# Essential Skills for the Future of Mining

# Digital & Technological Literacy



AUTOMATION,  
DATA ANALYTICS,  
AND REMOTE  
OPERATIONS



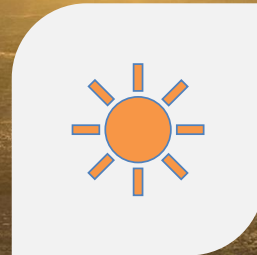
ROBOTICS,  
DRONES, DIGITAL  
TWINS



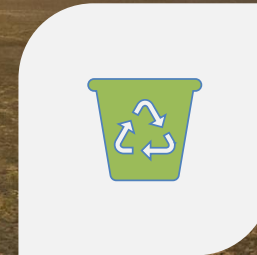
CYBERSECURITY  
AWARENESS



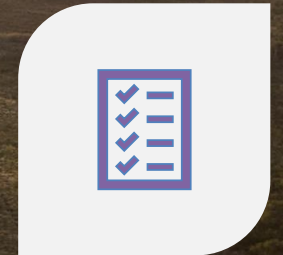
# Sustainability & Environmental Expertise



RENEWABLE  
ENERGY  
INTEGRATION



CARBON  
REDUCTION AND  
CIRCULAR  
ECONOMY  
PRACTICES



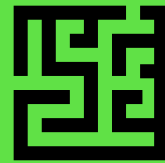
ESG REPORTING  
AND COMPLIANCE



# Systems Thinking & Innovation



INTEGRATING TECHNOLOGY,  
ENVIRONMENT, AND SOCIAL  
RESPONSIBILITY



CREATIVE PROBLEM SOLVING  
FOR COMPLEX CHALLENGES



DRIVING EFFICIENCY  
THROUGH INNOVATION

# Inclusive Leadership & Cultural Competence



FOSTERING  
DIVERSE AND  
INCLUSIVE  
WORKPLACES



INDIGENOUS  
ENGAGEMENT  
AND CULTURAL  
AWARENESS



LEADING WITH  
EMPATHY AND  
COLLABORATION



# Agility & Lifelong Learning



Adapting to rapidly evolving roles



Upskilling in hybrid technical/digital/sustainability areas



Growth mindset and resilience



# Global & Stakeholder Engagement



Strong  
communication  
and negotiation



Navigating  
global supply  
chains and  
investor  
expectations



Building trust with  
communities and  
regulators



# What This Means for Women in Mining

---

Opportunities to lead in digital  
and sustainability  
transformations

Women's collaborative and  
inclusive leadership styles are  
critical assets

A chance to shape culture,  
innovation, and long-term  
industry success



# Conclusion

---

The next decade  
demands new skillsets  
and mindsets

Women are uniquely  
positioned to drive  
this change

Successful career  
progression requires  
intentional personal  
development

Let's seize the  
opportunity to lead  
the industry into a  
more sustainable,  
innovative, and  
inclusive future





**Celine Mangan**

**General Manager, Environment & Heritage**

**OFFICE:** 20 Walters Drive,  
Osborne Park, WA 6017

**POSTAL:** Locked Bag 13,  
Osborne Park DC, WA 6916

**P** +61 8 9329 3600

**[www.mineralresources.com.au](http://www.mineralresources.com.au)**

